

State of Vermont DAIL Housing Safety Inspection Smoke Detector Information Sheet and FAQ

Frequently Asked Questions

Where do the smoke detectors need to be located?

- In the room where a heating source is located
- All bedrooms in the house

Can I have combination alarms (CO and Smoke)?

- Yes, these are ideal for areas with a heat source.

Can the smoke alarms be battery operated?

- No, the smoke alarms must have a sealed 10-yr life lithium-ion battery or be hardwired to the house. If the smoke alarm is hardwired, there will be a place for a battery backup. If the smoke detector is designed to be hardwired, it must be hardwired or it is non-compliant.

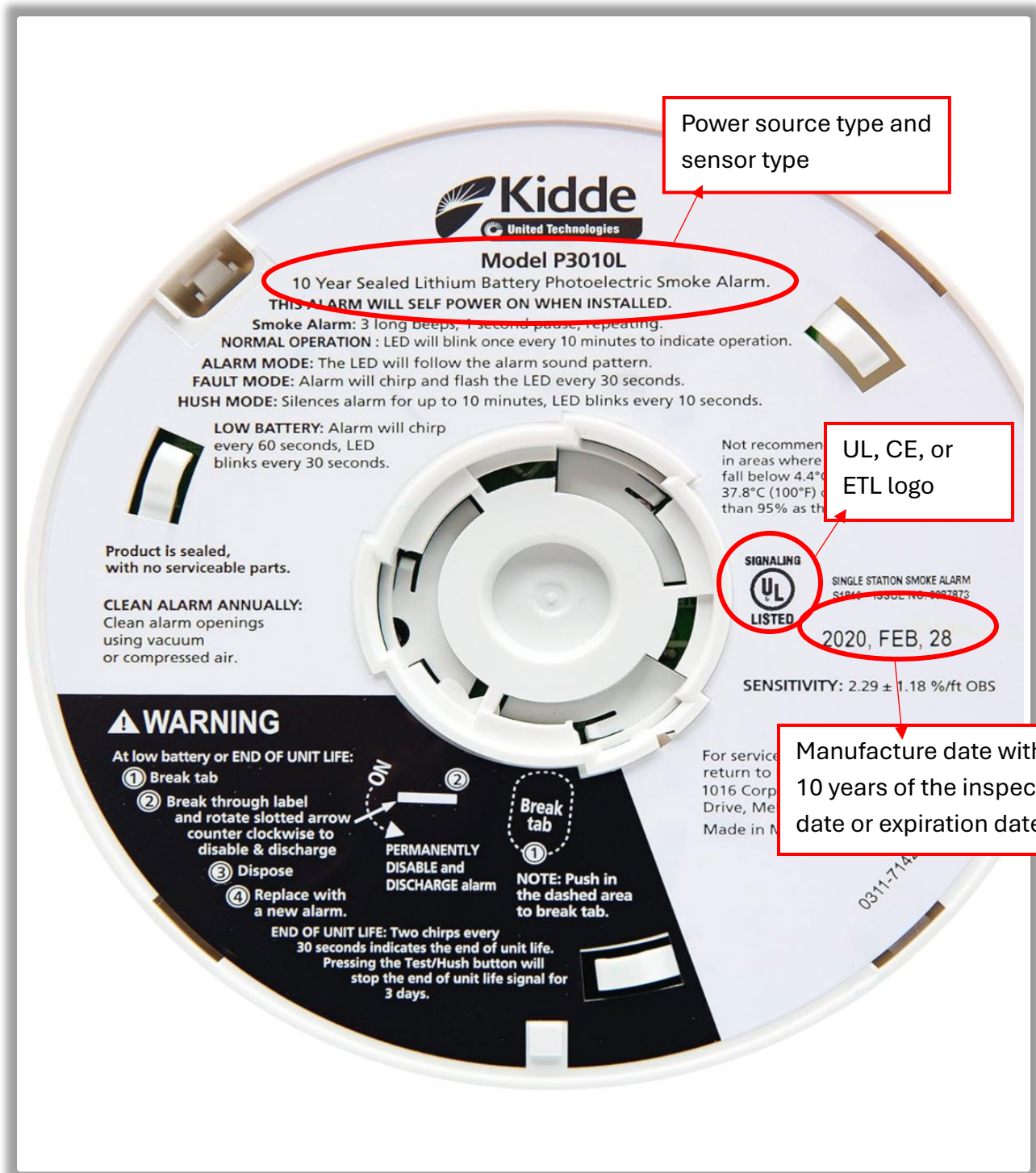
What if the information needed for the smoke detector is located on the box or paper insert and not on the detector?

- This is considered non-compliant for the inspection. All information must be located on the detector itself and accessible during the inspection. There is no way to be sure the box or paperwork is for this specific detector.

Where is the best place to get a compliant smoke detector?


- Your local hardware store where you can physically verify all the necessary information is located on the detector and you have the correct one. It is tempting to go on Amazon and get the cheapest package deal but often, they will not pass the inspection.

What information should be found ON the Detector?



Acceptable Models

This list is not exclusive, but these are the most common models that fit the requirements of the DAIL Housing Safety Inspections. The names next to the smoke detectors are hyperlinks to order from Amazon.

<p>Kidde Smoke Detector, 10-Year Battery, Photoelectric Sensor Smoke Alarm</p>	<p>Kidde Smoke Detector, 10-Year Battery, Photoelectric Sensor Smoke Alarm - Amazon.com</p> 
<p>First Alert SM210, 10-Year Sealed Battery Smoke Alarm</p>	<p>Amazon.com: First Alert SM210, 10-Year Sealed Battery Smoke Alarm with Slim Profile Design, 1-Pack :</p> 
<p>AEGISLINK Smoke Detector S500 10-Year Battery with Test/Silence Button, Fire Alarm with Photoelectric Sensor</p>	<p>AEGISLINK Smoke Detector 10-Year Battery with Test/Silence Button, Fire Alarm with Photoelectric Sensor, Low Battery Warning, S500 (Independent, 6-Pack) - Amazon.com</p> 
<p>SITERWELL Smoke Detector, Smoke Detector 10 Year Battery with Photoelectric Sensor, Fire Alarm with Low Battery and Fault Warning for House and Bedroom, UL217-9th Listed, GS525A, 1 Pack</p>	<p>SITERWELL Smoke Detector, Smoke Detector 10 Year Battery with Photoelectric Sensor, Fire Alarm with Low Battery and Fault Warning for House and Bedroom, UL217-9th Listed, GS525A, 1 Pack - Amazon.com</p> 