

State of Vermont DAIL Housing Safety Inspection

Smoke Detector Guidance

May 2026

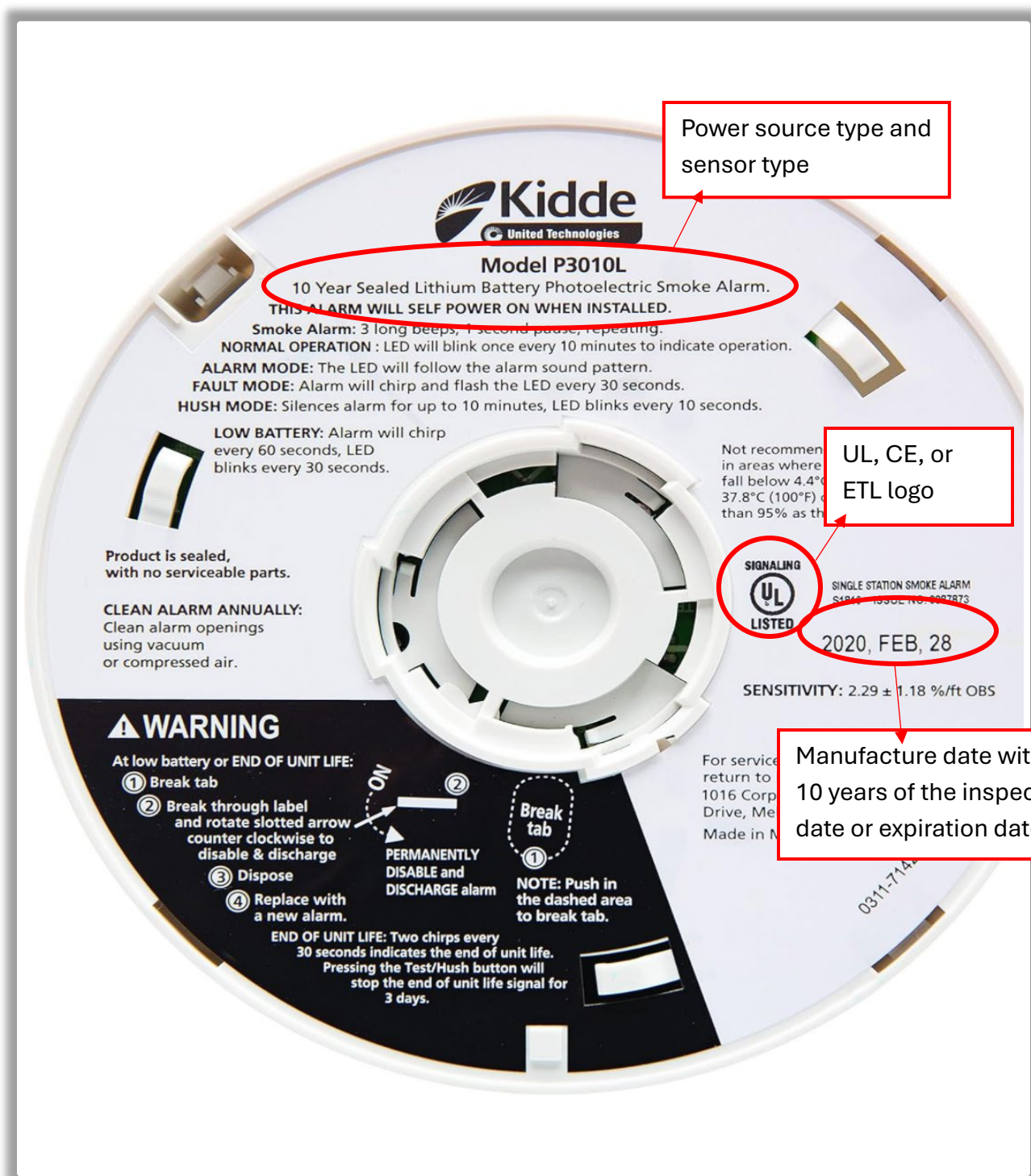
Smoke Detectors MUST be:

- **Photoelectric.** Ionization smoke detectors are non-compliant and will not be accepted.
- **Sealed 10-year lithium battery.** The battery should be non-removable. Smoke detectors with accessible batteries are non-compliant and will not be accepted. Smoke detectors with 9v or AA batteries are non-compliant and will not be accepted. Please note: hardwired smoke detectors will have an accessible battery backup. This type of battery backup is compliant and will be accepted.
- **Identifiable as photoelectric on the smoke detector device.** Look for a “photoelectric” label or the letter [P] on the smoke detector itself. Smoke detectors are non-compliant and will not be accepted if the photoelectric label is not on the smoke detector itself.
- **Contain a manufacturer’s date on the smoke detector device** within 10 years of the inspection date or the expiration date. This will be printed on the device itself on the back by the manufacturing company – not something that is handwritten in.
- **Contain a UL logo on the smoke detector device.** This signifies the device is certified by Underwriters Laboratories to meet safety, quality, and performance requirements.
- **Placed in appropriate areas of the home** including: all bedrooms, common spaces, and any room where a heating source is located.

Quick Tips




- It is recommended to obtain smoke detectors in person at your local hardware store. You will be able to verify all the necessary information is located on the detector and ensure you have the correct one.
- Use caution when purchasing on Amazon. Look for the product information and available photos to verify all required information is on the back of the smoke detector.
- Combination Smoke and Carbon Monoxide detectors are acceptable, if the above requirements are met. Combination Smoke and CO detectors are recommended for common areas of the home and areas that have heat sources.

What information should be found ON the Detector?



Acceptable Models

This list is not exclusive, but these are the most common models that fit the requirements of the DAIL Housing Safety Inspections. The names next to the smoke detectors are hyperlinks to order from Amazon. These links are not always up to date – please use caution when purchasing.

<p>Kidde Model 20SD10</p> <p>Smoke Alarm</p>	<p>Kidde Smoke Detector, 10-Year Battery Powered, Photoelectric Sensor Smoke Alarm, LED Light Indicators - Amazon.com</p>	
<p>First Alert Model SM210</p> <p>Smoke Alarm</p>	<p>First Alert SM210, 10-Year Sealed Battery Smoke Alarm with Slim Profile Design, 1-Pack – Amazon.com</p>	
<p>Kidde Model 30CUD10</p> <p>Smoke and Carbon Monoxide Combination Alarm</p>	<p>Kidde Smoke and Carbon Monoxide Detector, 10-Year Battery Powered, LED Status Lights, 1 Pack – Amazon.com</p>	
<p>First Alert Model SMCO210</p> <p>Smoke and Carbon Monoxide Combination Alarm</p>	<p>First Alert SMCO210, 10-Year Sealed Combination Smoke & Carbon Monoxide Alarm with Slim Profile Design – Amazon.com</p>	